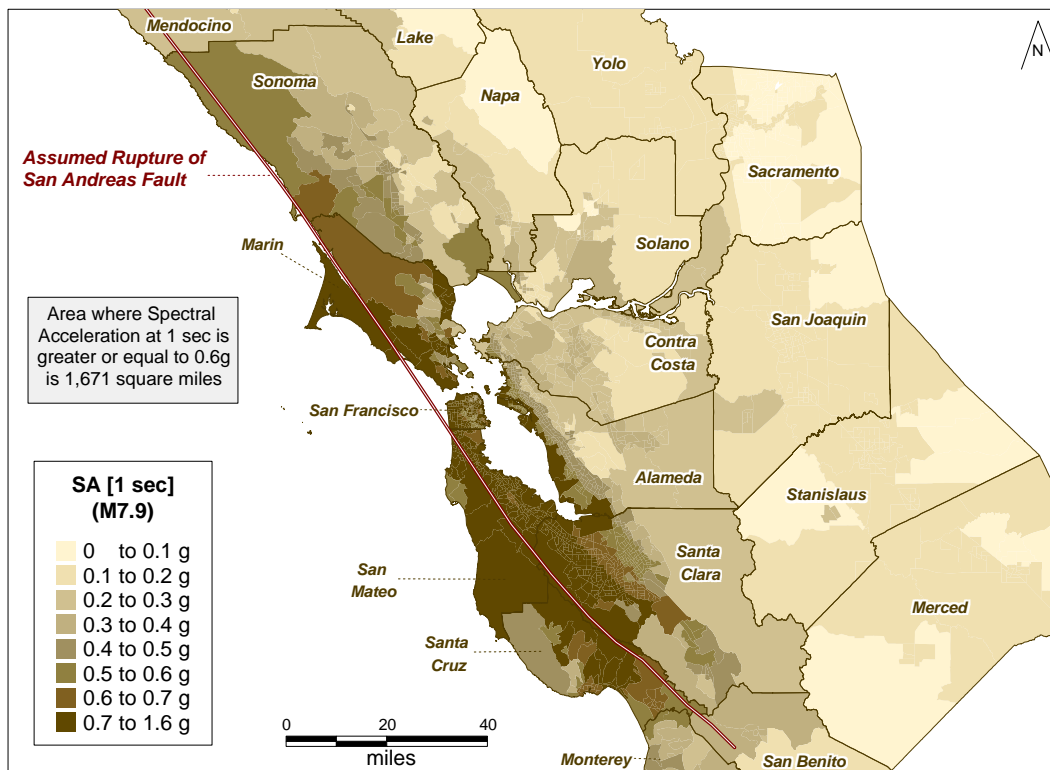
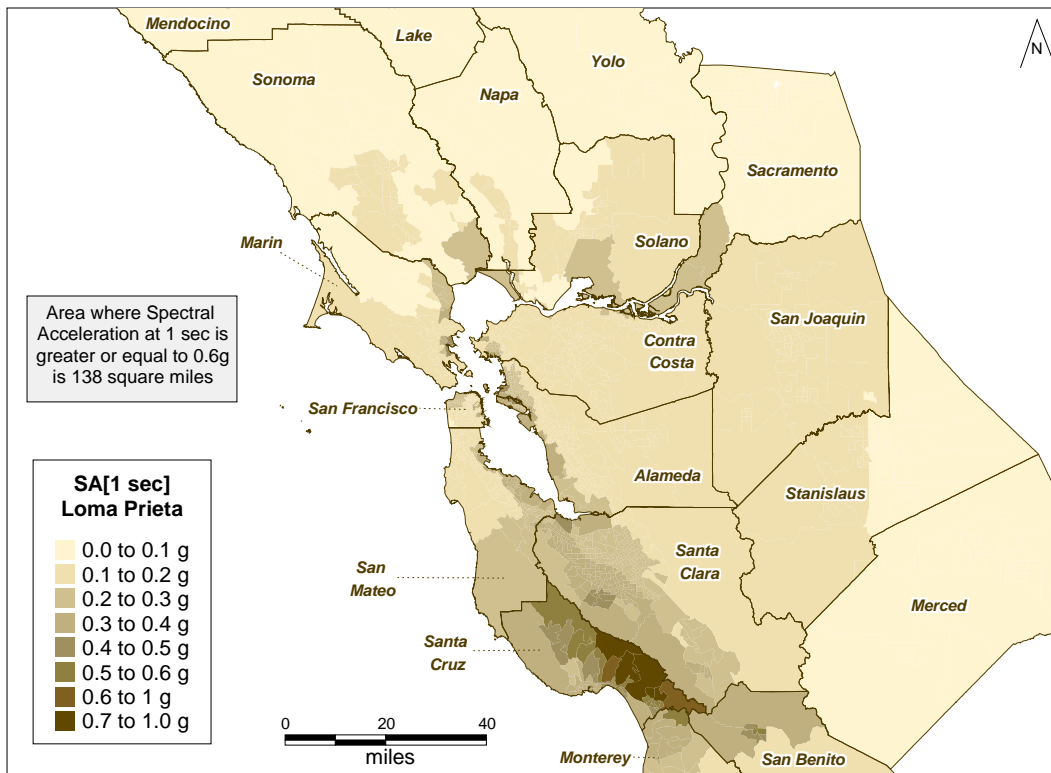


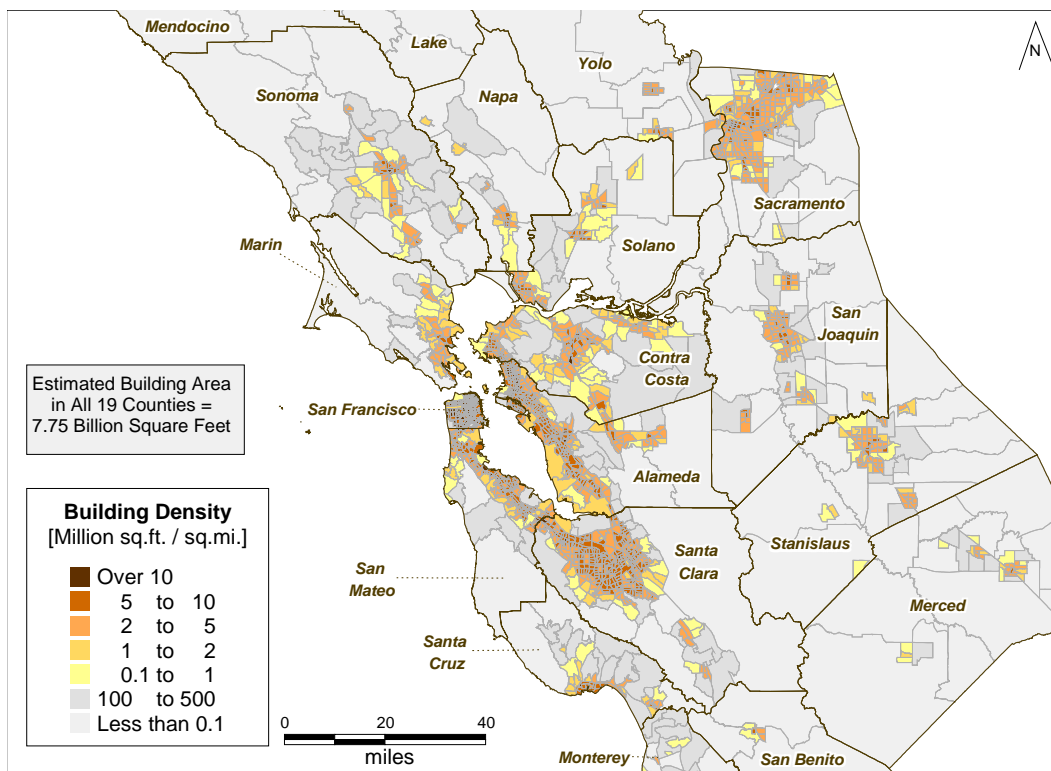
**Figure 1.** Map of study region showing 1-second spectral acceleration ground motions of the 1906 San Francisco Earthquake (based on Boatwright et al., 2006)



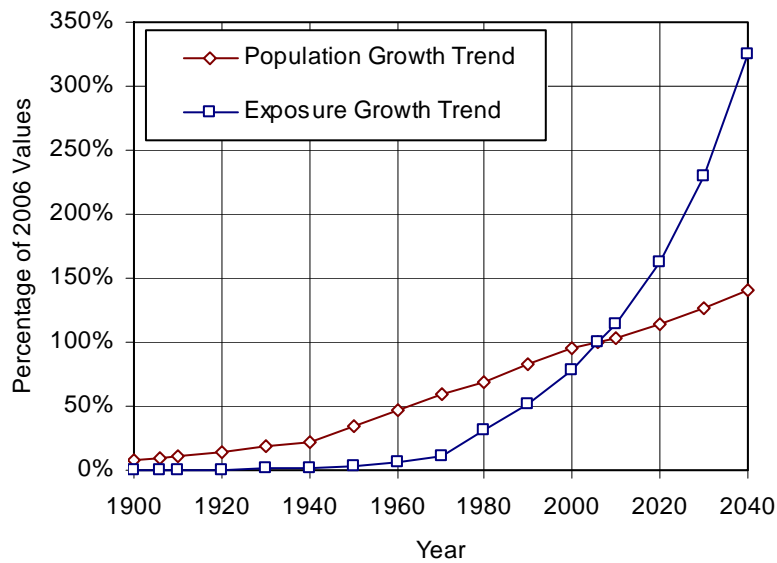
**Figure 2.** Map of study region showing 1-second spectral acceleration ground motions for a magnitude M7.9 earthquake on the San Andreas Fault (near San Francisco)



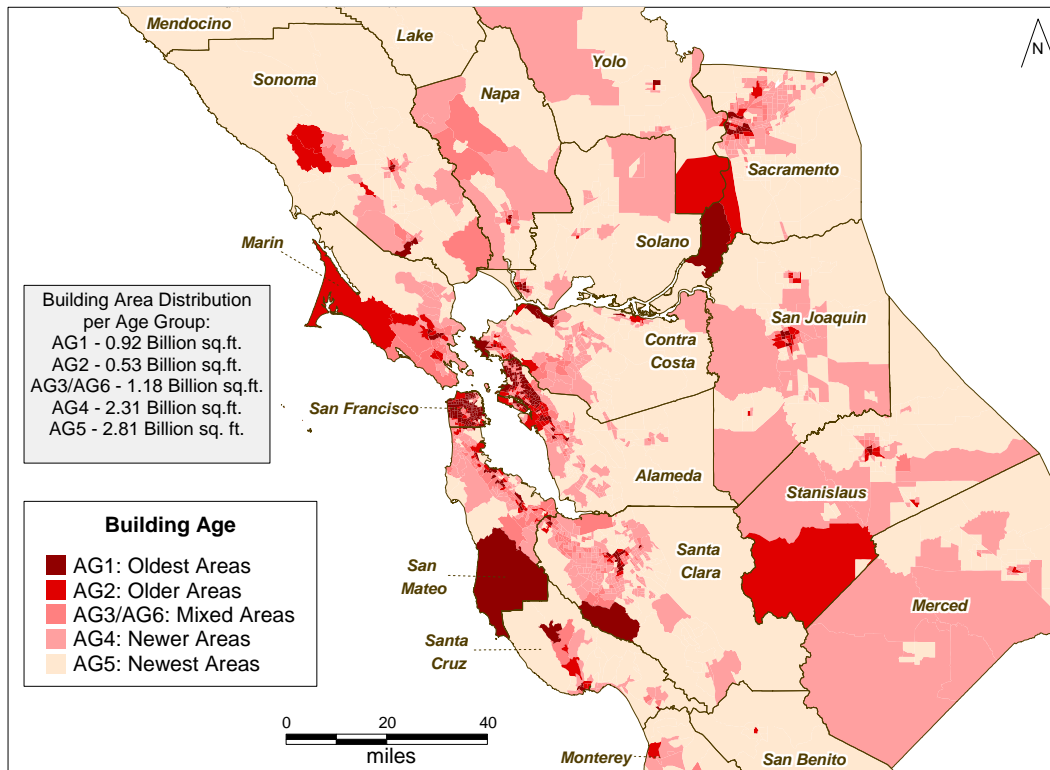
**Figure 3.** Map of study region showing 1-second spectral acceleration ground motions for the 1989 Loma Prieta earthquake based on Pitarka et al. (1997)



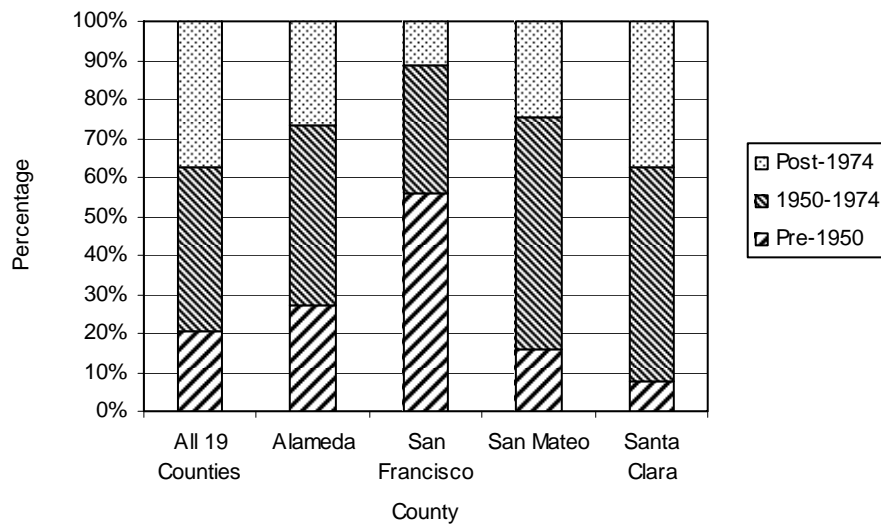
**Figure 4.** Map of study region showing 19 counties and areas of greater and lesser building density (i.e., total building square footage normalized by census tract area)



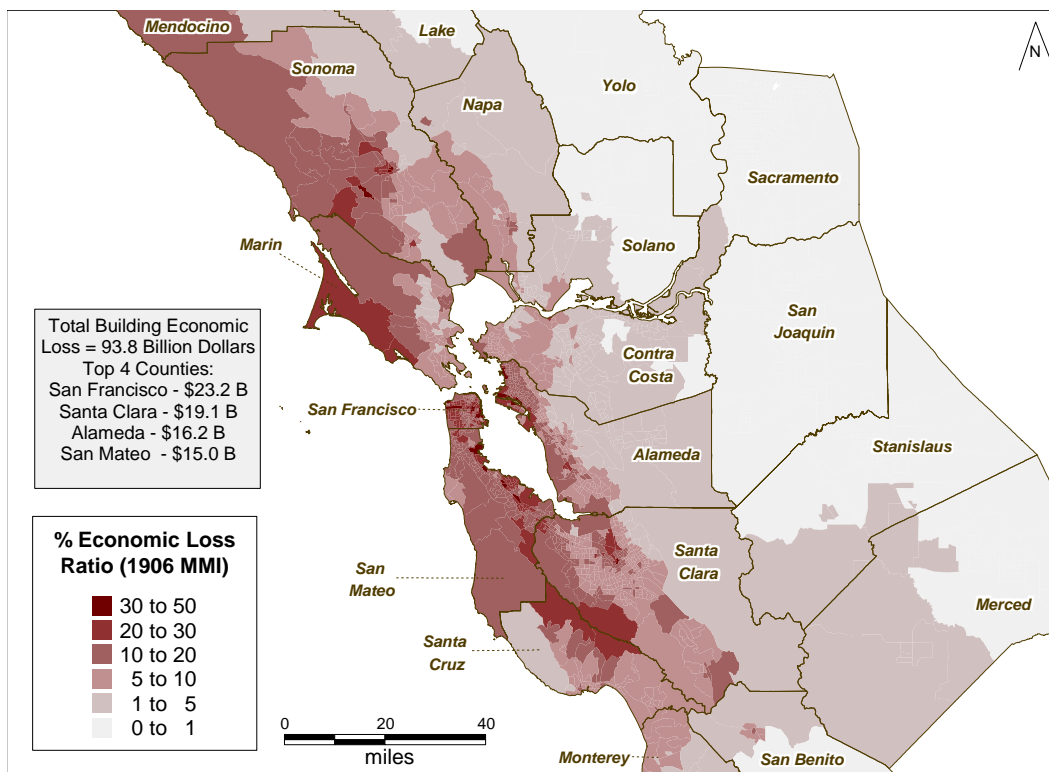
**Figure 5.** Trends in study region population and building exposure growth, 1900 - 2040, normalized to 2006 values



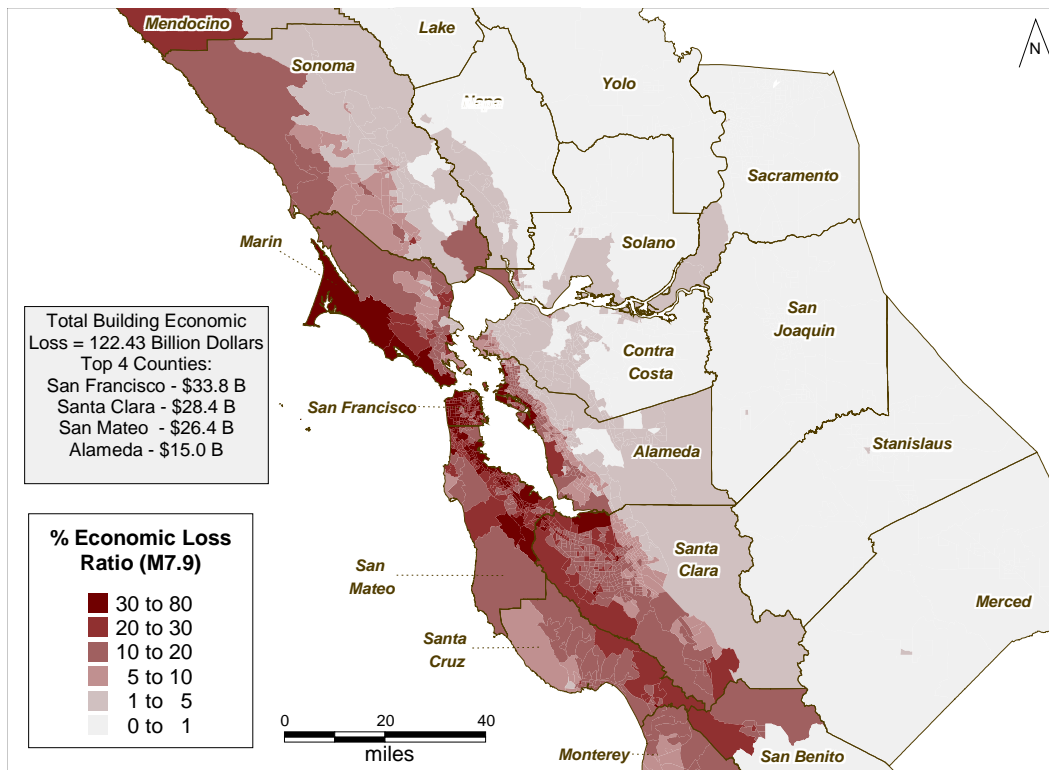
**Figure 6.** Map of study region showing 19 counties and areas of older and newer buildings (based on age of residential buildings)



**Figure 7.** Distribution of buildings by age group for key counties and the study region



**Figure 8.** Map of study region showing direct economic loss ratio by census tract for all buildings based on 1906 MMI ground motions



**Figure 9.** Map of study region showing direct economic loss ratios by census tract for all buildings based on magnitude M7.9 ground motions